

PHYSICIANS' FORUM

2001-2005

Lyme disease overview

Lyme disease diagnosis

Lyme disease and the specialties

Lyme disease - neuropsychiatric presentations

Lyme disease and other tick-borne illnesses

PHYSICIANS' FORUM

Lyme Disease Overview	15 March 2001
Lyme Disease Diagnosis	9 May 2002
Lyme Disease and the Specialties	13 November 2003
Lyme Disease – Neuropsychiatric Presentations	19 May 2004
Lyme Disease and Other Tick-Borne Illnesses	12 May 2005

Lyme Disease Overview

March 15, 2001

Lyme Disease Physicians' Forum

WHERE: RADISSON INN,
HYANNIS

WHEN: Thursday, March 15, 2001

6:00 - 9:00 P.M.

WHO SHOULD ATTEND: Physicians,
Physicians Assistants, and Nurse
Practitioners who provide direct care
to Lyme Disease Patients.



CEU, CME accredited
There is no cost to participants.

Supported by:

Barnstable County Dept. of Health & Environment
Cape Cod Cooperative Extension
Massachusetts Department of Public Health

Speakers

- Alfred DeMaria Jr., MD (Moderator)
- Robin Travers, MD
- Dave Simser, BCE
- Bela Matyas, MD
- Sam Donta, MD
- Richard Tilton, PhD
- Dorothy Pietrucha, MD
- Brian Fallon, MD
- Robert Kalish, MD

Lyme Disease Overview - Program

FORUM FORMAT

5:00 - 6:00 P.M. - Registration and
Chinese Buffet Dinner

6:00 - 9:00 P.M. - Program

The Lyme Disease Physicians' Forum will be an interactive, case-based discussion, intended to explore the many presentations and management of this disease. The format will encourage audience involvement. Our panel of specialists will initiate, and serve as a resource, for these discussions. An evidence-based approach to therapeutic recommendations will be emphasized.

Seating limited to 150.
Registration is required.

Radisson Inn
287 Iyanough Road
Hyannis, MA 02601
508 -771-1700

Directions to Radisson Inn:

Route 6 to Exit 7. At end of exit, turn left onto Willow St. Go 2.1 miles to lights. Turn right on Iyanough Road. Radisson is .3 miles on left. Parking is free.

Panel of Participants

MODERATOR: Dr. Alfred DeMaria, Jr.

*Assistant Commissioner
Director of Bureau of Communicable Disease Control
State Epidemiologist, State Lab*

DERMATOLOGY: Dr. Robin Travers

Skin Care Physicians of Chestnut Hill

ENTOMOLOGY: Dave Simser

*Deer Tick Surveillance Coordinator
Cape Cod Cooperative Extension*

EPIDEMIOLOGY: Dr. Bela Matyas

Massachusetts Dept. of Public Health

INFECTIOUS DISEASES: Dr. Sam Donta,

*Professor of Medicine, Boston University & Boston VA
Medical Centers*

LABORATORY DIAGNOSIS: Dr. Richard
Tilton

*Senior VP & Medical Director, BBI Clinical Labs
Editor in Chief: Spirochetal and Tick-Borne Diseases
Professor of Laboratory Medicine, U. of Connecticut*

PEDIATRIC NEUROLOGY:

Dr. Dorothy Pietrucha

*American Board of Pediatrics
American Board of Psychiatry & Neurology with Special
Competence in Child Neurology*

PSYCHIATRY: Dr. Brian Fallon

*Associate Professor: Columbia University
Director of Lyme Disease Research Program
New York State Psychiatric Institute*

RHEUMATOLOGY: Dr. Robert Kalish

*Assistant Professor of Medicine,
Tufts University Medical School
Rheumatologist at New England Medical Center*

LYME DISEASE PHYSICIANS' FORUM

EDUCATIONAL OBJECTIVES:

Participants will explore, share information among themselves and with national experts and increase their knowledge relative to these questions:

What are the options for management of deer tick bites, and what available data can help with these decisions?

How may the range of presentations of erythema migrans be recognized?

What is the spectrum of the diverse manifestations of late/chronic Lyme Disease?

What are the available treatment options for early and late/chronic Lyme Disease, and what data support them?

* * * * *

Approved for 3 hrs. CMEs through
Cape Cod Hospital.

Lyme Disease Diagnosis

May 9, 2002

Lyme Disease Diagnosis 2002 A Physicians' Forum

WHERE: COURTYARD BY MARRIOTT
HYANNIS

WHEN: Thursday, May 9, 2002
5:00 - 9:00 P.M.

WHO SHOULD ATTEND: Physicians,
Physicians Assistants and Nurse
Practitioners who provide direct care
to Lyme disease patients.



CEU, CME accredited
There is no cost to participants.

Supported by:

Barnstable County Dept. of Health & Environment
Cape Cod Cooperative Extension
Massachusetts Department of Public Health
Cape & Islands Lyme Disease Task Force

Speakers

- Alfred DeMaria Jr., MD (moderator)
- Sam Donta, MD
- Wendy Clough, MD
- J. Stephen Dumler, MD
- Nancy A. Shadick, MD
- Debra Solomon, MD

Lyme Disease Diagnosis – Program

FORUM FORMAT

5:00 - 6:00 P.M. - Registration and Dinner

6:00 - 9:00 P.M. - Program

The basis for a clinician's approach to a patient is the establishment of a diagnosis. When does Lyme disease become suspect? What clinical signs does an experienced diagnostician rely upon to include, or exclude Lyme disease? What is the role of the clinical laboratory and imaging studies in supporting the diagnosis?

The Lyme Disease Diagnosis Physicians' Forum will be an interactive discussion, intended to explore the many presentations and management of this disease. The format will encourage audience involvement.

Seating limited to 100.
Registration is required.

Courtyard by Marriott
707 Route 132
Hyannis MA 02601
508 775-6600

Directions to Courtyard by Marriott:

Route 6 to Exit 6. Head south on Route 132 towards Hyannis. Approximately 2 miles ahead and just past the Cape Cod Mall turn right into the Courtyard by Marriott.

Panel of Participants

MODERATOR: Dr. Alfred DeMaria Jr.
*Assistant Commissioner
Director of Bureau of Communicable Disease Control
Massachusetts Department of Public Health*

FACILITATOR: John Goodrich
*Management Consultant & Facilitator of Public Dialogues
Hardwick, Massachusetts*

INFECTIOUS DISEASES: Dr. Sam Donta
Professor of Medicine, Boston University Medical Center

INTERNAL MEDICINE: Dr. Wendy Clough
Professor of Infectious Diseases, Brown University

LAB DIAGNOSIS: Dr. J. Stephen Dumler
*Professor of Medical Microbiology,
Johns Hopkins Medical Center*

RHEUMATOLOGY: Dr. Nancy A. Shadick
*Director, Robert B. Brigham Arthritis Center
Brigham & Women's Hospital*

PSYCHIATRY: Dr. Debra Solomon
*Rhode Island Governor's Commission on Lyme Disease
Advisory Committee*

LYME DISEASE DIAGNOSIS 2002 A PHYSICIANS' FORUM

EDUCATIONAL OBJECTIVES:

Participants will:

- Improve ability to diagnose or exclude the diagnosis of Lyme disease, on the basis of history, clinical examination findings and laboratory studies.
- Evaluate the predictive value of available diagnostic tests.
- Gain an understanding of the controversial aspects of available diagnostic methods.
- Review the major literature in the field for the past year.

Approved for 3 hours CME through
Cape Cod Hospital.

Lyme Disease and the Specialties

13 November 2003



THIRD ANNUAL PHYSICIANS' FORUM

LYME DISEASE AND THE SPECIALTIES

PRESENTED BY

BARNSTABLE COUNTY
DEPARTMENT OF HEALTH AND THE ENVIRONMENT
CAPE COD COOPERATIVE EXTENSION
MASSACHUSETTS DEPARTMENT OF PUBLIC HEALTH
CAPE & ISLANDS LYME DISEASE TASK FORCE

WHO SHOULD ATTEND?

PHYSICIANS, PHYSICIAN ASSISTANTS AND
NURSE PRACTITIONERS WHO PROVIDE DIRECT CARE
TO LYME DISEASE PATIENTS

REGISTRATION AND BUFFET (4:30-5:30)
PRESENTATIONS AND DISCUSSION (5:30-8:30)

THURSDAY,
NOVEMBER 13, 2003

4:30-8:30

COURTYARD
BY
MARRIOTT

HYANNIS, MA

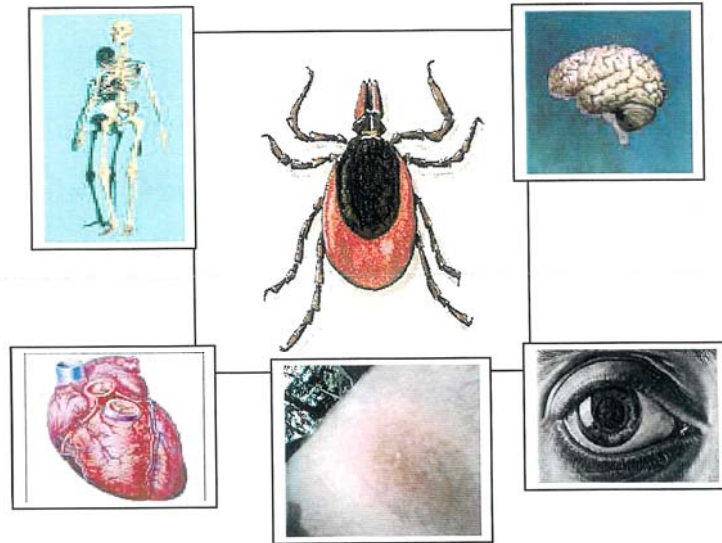


FULL SUPPORT FOR THIS CONFERENCE MADE POSSIBLE BY THE
MASSACHUSETTS DEPARTMENT OF PUBLIC HEALTH AND
BARNSTABLE COUNTY

Lyme Disease and the Specialties - Program

Lyme disease, as we know, is a multi-systemic disorder of protean manifestations. In this year's third annual Physicians Forum on Lyme disease, we will hear from a diverse panel of specialist physicians whose perspective on this disease will be presented.

We understand that a diagnosis is not made in any condition until it is first considered. It is the goal of this Forum to expand upon the range of presentations of Lyme disease that the clinician will recognize. We have, in previous years, focused on the more common manifestations and will review and re-examine them. The spectrum of presenting signs and symptoms leading to the diagnosis of Lyme will be discussed.



EDUCATIONAL OBJECTIVES

(APPROVED FOR 3 HOURS CME THROUGH CAPE COD HOSPITAL)

Participants will learn, for each of the fields of dermatology, cardiology, neurology, psychiatry, ophthalmology and orthopedics, the more common and significant presentations, and as well, some of the less frequently seen manifestations of Lyme disease. This will improve the ability to conduct a Lyme disease specific review of systems and a knowledgeable physical examination.

Lyme Disease and the Specialties - Speakers

SPEAKERS

MODERATOR

Dr. Alfred DeMaria, Jr. Assistant Commissioner
Director of Bureau of Communicable Disease Control
Massachusetts Department of Public Health

DEER TICKS AND INFECTION

Roberta Clark, Extension Educator
Barnstable County Cooperative Extension - Barnstable, MA

THE EYE and LYME DISEASE

Dr. Clement Trempe
Schepens Retina Associates - Boston MA

ORTHOPEDICS

Dr. Robert Wilsterman
Orthopedic Specialists - Falmouth, MA

CARDIOLOGY

Dr. Bruce Levy
Cardiovascular Specialists - Falmouth, MA

EAR, NOSE and THROAT

Dr. Bruce Gordon
Cape Cod Ear, Nose & Throat Specialists - Hyannis, MA

ERYTHEMA MIGRANS - DERMATOLOGY

Dr. Jonathan Edlow
Beth Israel Deaconess Medical Center - Boston, MA

CONCLUDING REMARKS

Dr. Sam Donta
Infectious Diseases - Falmouth, MA

-Alfred DeMaria Jr., MD (moderator)

-Susan Soliva.MPH

-Roberta Clark

-Clement Trempe, MD

-Robert Wilsterman, MD

-Bruce Levy, MD

-Bruce Gordon, MD

-Jonathan Edlow, MD

-Sam Donta, MD

Lyme Disease - Neuropsychiatric Presentations

19 May 2004



FOURTH ANNUAL PHYSICIANS' FORUM

LYME DISEASE - NEUROPSYCHIATRIC PRESENTATIONS

(AN OVERVIEW FOR CLINICIANS)

PRESENTED BY

BARNSTABLE COUNTY
DEPARTMENT OF HEALTH AND THE ENVIRONMENT
CAPE COD COOPERATIVE EXTENSION
MASSACHUSETTS DEPARTMENT OF PUBLIC HEALTH
CAPE & ISLANDS LYME DISEASE TASK FORCE

WHO SHOULD ATTEND?

PHYSICIANS, PHYSICIAN ASSISTANTS AND
NURSE PRACTITIONERS WHO PROVIDE DIRECT CARE
TO LYME DISEASE PATIENTS

REGISTRATION AND BUFFET (5:00-6:00)
PRESENTATIONS AND DISCUSSION (6:00-8:00)

WEDNESDAY
MAY 19, 2004

5:00 TO 8:00 PM

COURTYARD
BY
MARRIOTT

508.775.6600

ROUTE 132
HYANNIS, MA

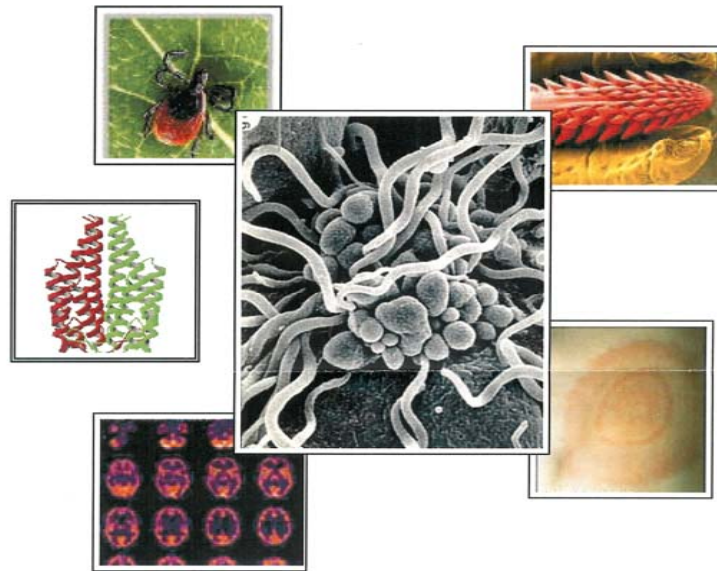


SUPPORT FOR THIS CONFERENCE MADE POSSIBLE BY
THE MASSACHUSETTS DEPARTMENT OF PUBLIC HEALTH
AND BARNSTABLE COUNTY

Lyme Disease – Neuropsychiatric Presentations Program

This fine panel will meet on May 19, 2004 in Hyannis for our Fourth Annual Physicians' Forum. Participants will hear description and discussion of the behavioral, neurological, and cognitive manifestations often presented by patients with Lyme disease. It promises to be an informative and interesting evening. We hope that you will join us.

Brian O'Malley, MD



CENTER IMAGE: ELECTRON MICROGRAPH, BORRELIA BURGDORFERI; CLOCKWISE FROM TOP RIGHT: IXODES MOUTH PARTS; ERYTHEMA MIGRANS; CT BRAIN SCAN; COMPUTER IMAGE, OSP C PROTEIN; FEMALE ADULT DEER TICK.

EDUCATIONAL OBJECTIVES

(APPROVED FOR 3 HOURS CME THROUGH CAPE COD HOSPITAL)

Participants will learn the neuropsychiatric manifestations of Lyme neuroborreliosis presented clinically, including those less frequently seen as well as the more common ones. This will improve the ability to conduct a Lyme disease specific review of systems and a knowledgeable physical examination.

Lyme Disease – Neuropsychiatric Presentations Speakers

WELCOME

Senator Robert A. O'Leary - Cape and Islands District
Brenda J. Boleyn - Chair, Cape & Islands Lyme Disease Task Force

MODERATOR

Alfred DeMaria, Jr., MD - Assistant Commissioner
Director, Bureau Communicable Disease Control
Massachusetts Department Public Health

NEUROPSYCHIATRY

Brian A. Fallon, MD, MPH
Assoc. Professor Psychiatry, Director, Lyme Disease Research Program
Columbia University

PSYCHIATRY

Debra J. Solomon, MD
Private practice in southern RI
RI Governor's Commission on Lyme Disease

NEUROLOGY

Viken L. Babikian, MD
Professor, Department Neurology
Boston University School of Medicine

IMAGING STUDIES

Richard B. Noto, MD
Director, Division of Nuclear Medicine, RI Hospital
Assoc. Professor, Dept. Diagnostic Imaging, Brown Medical School

PSYCHOLOGICAL TESTING

Leo J. Shea III, PhD
Clinical Asst. Professor of Rehabilitation Medicine
New York University School of Medicine

DIAGNOSIS AND TREATMENT OF NEUROLOGICAL LYME DISEASE

Sam T. Donta, MD
Professor of Medicine (ret)
Infectious Disease Specialist -Falmouth, MA

-Alfred DeMaria Jr., MD (moderator)

-Susan Soliva, MPH

-Brian A. Fallon, MD

-Debra J. Solomon, MD

-Viken Babikian, MD

-Richard B. Noto, MD

-Leo J. Shea III, PhD

-Sam T. Donta, MD

Lyme Disease and Other Tick-Borne Illnesses

12 May 2005



THURSDAY
MAY 12, 2005

4:30 TO 8:30 PM

COURTYARD
BY
MARRIOTT

508.775.6600

ROUTE 132
HYANNIS,
MA



FIFTH ANNUAL PHYSICIANS' FORUM

LYME DISEASE AND OTHER TICK-BORNE ILLNESSES

PRESENTED BY

BARNSTABLE COUNTY
DEPARTMENT OF HEALTH AND THE ENVIRONMENT
CAPE COD COOPERATIVE EXTENSION
MASSACHUSETTS DEPARTMENT OF PUBLIC HEALTH
CAPE & ISLANDS LYME DISEASE TASK FORCE

WHO SHOULD ATTEND?

PHYSICIANS, PHYSICIAN ASSISTANTS AND
NURSE PRACTITIONERS WHO PROVIDE DIRECT CARE
TO LYME DISEASE PATIENTS

REGISTRATION (4:30-5:00)

PRESENTATIONS AND DISCUSSION (5:00-6:30)

BUFFET (6:30-7:00)

PRESENTATIONS AND DISCUSSION (7:00-8:30)

SUPPORT FOR THIS CONFERENCE MADE POSSIBLE BY
THE MASSACHUSETTS DEPARTMENT OF PUBLIC HEALTH
AND BARNSTABLE COUNTY

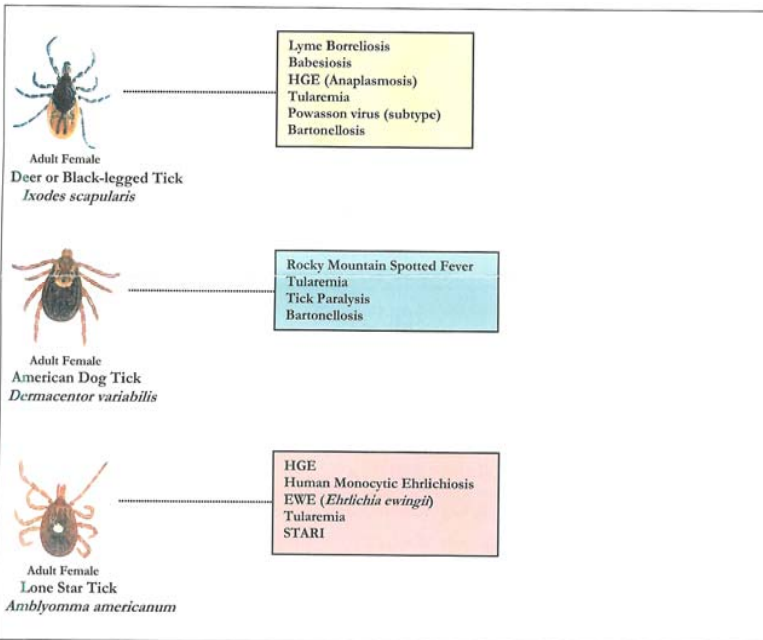
Lyme Disease and Other Tick-Borne Illnesses-Program

Forum Synopsis

The ticks which transmit Lyme Disease are also known to be responsible for carriage of several other infections, among them, Ehrlichiosis/Anaplasmosis, Tularemia, Babesiosis, Rocky Mountain Spotted Fever and Bartonellosis. Moreover, these ticks can, and often do, carry two or more communicable pathogens at the same time, with the potential of causing "co-infections" in a bitten host. The clinician must be aware of these possible other infections when evaluating a patient with either a tick bite history, or with a case of Lyme Disease – especially a case which seems not to respond fully to appropriate therapy.

We have assembled a panel of experts in these varied infectious diseases to provide us with a structured review. As in the past, dinner and up to three hours CME are provided at these well attended gatherings. Join us for this fifth annual Lyme Disease Forum and be ready for the outdoor season!

TICKS AND TICK-BORNE DISEASES



EDUCATIONAL OBJECTIVES

(APPROVED FOR 3 HOURS CME THROUGH CAPE COD HOSPITAL)

Participants will learn the infectious diseases – Lyme Disease, Babesiosis, Tularemia, Ehrlichiosis, Rocky Mountain Spotted Fever and Bartonellosis which may be transmitted by the three major tick species found in this region; will understand the different microorganisms responsible; will be able to recognize the presentations of each disease and the diagnostic tests of greatest utility for each; and will be able to appropriately institute prompt therapy. Participants will also gain an understanding of the atypical presentations and responses which may be observed when a patient has more than one concurrent tick-borne disease.

Lyme Disease and Other Tick-Borne Illnesses - Speakers

WELCOME

Shirley A. Gomes, State Representative
Barnstable 4th District
Brenda J. Boleyn - Chair, Cape & Islands Lyme Disease Task Force

MODERATOR

Alfred DeMaria, Jr., MD - Assistant Commissioner
Director, Bureau Communicable Disease Control
Massachusetts Department of Public Health

EPIDEMIOLOGY UPDATE

Erica Berl, DVM
Massachusetts Department of Public Health

TICKS OF CAPE COD AND THE ISLANDS

David Simser, BCE
Barnstable County Cooperative Extension

LYME DISEASE - AN OVERVIEW

Sam T. Donta, MD
Professor of Medicine (retired)
Infectious Disease Specialist
Falmouth, MA

BABESIOSIS

Peter J. Krause, MD (invited)
Director of Infectious Disease
Connecticut Children's Medical Center
Hartford, CT

EHRlichiosis & Rocky Mountain Spotted Fever

J. Stephen Dumler, MD
Division of Medical Microbiology
Johns Hopkins School of Medicine
Baltimore, MD

-Alfred deMaria Jr., MD (moderator)

-Erica Berle, DVM

-David Simser, BCE

-Sam T. Donta, MD

-Peter J. Krause, MD

-J. Stephen Dumler, MD